

**Sayı** : 38591462-010.07.03-2021-3354

22.12.2021

**Konu** : ICS COVID-19 Güncel Duyurusu

Sirküler No: 1293

Sayın Üyemiz,

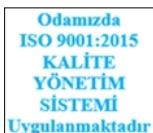
Uluslararası Deniz Ticaret Odası (International Chamber of Shipping-ICS) tarafından gönderilen 20 Aralık 2021 tarihli Ek-1'de sunulan yazıda, Dünya Sağlık Örgütü'nün (World Health Organization-WHO) yayınladığı, ülkelerden bildirilen "Koronavirüs" (COVID-19) akut solunum yolu hastalık vaka tablosunu içeren güncel istatistiki bilgiler Odamıza iletilmiştir.

Bahse konu yazıda, 20 Aralık 2021 tarihi itibarıyla toplam 271.963.258 adet COVID-19 vakası tespit edildiği, mevcut durumda 220 ülke ve bölgeden vaka bildirildiği belirtilmekte olup, rapor tarihi itibarıyla en fazla COVID-19 vakası tespit edilen ilk 12 ülke, COVID-19 salgını vaka ve vefat sayılarının olduğu tablo ve ülkeler hakkında güncel bilgiler bulunmaktadır.

Yazıda ayrıca, COVID-19 salgınıyla mücadele kapsamında uygulanan iyi örnekler ile ülkeler tarafından sürdürülen aşı programları hakkındaki gelişmelere ait bilgilerin yanı sıra aşağıdaki konulara yer verilmektedir:

1. Dünya Sağlık Örgütü tarafından oluşturulan, COVID-19'a yönelik haftalık epidemiyolojik ve operasyonel güncel bilgilerin bulunduğu bültenin (<https://bit.ly/32gaJk6>) adresinde,
2. Dünya Sağlık Örgütü'nün COVID-19 Aşı Takip web sitesinin (<https://bit.ly/32o2j9Q>) adresinde,
3. Uluslararası Sivil Havacılık Örgütü (International Civil Aviation Organization – ICAO) tarafından hazırlanan ICAO COVID-19 Ekonomik Etki belgesinin (<https://bit.ly/3yMhcim>) web adresinde,
4. COVID-19 vakalarına yönelik hazırlanan ve günlük olarak güncellenen veri kaynağına (<https://bit.ly/3HHwXLG>) adresinde,
5. Denizcilere aşı uygulanan tüm limanların listesinin (<https://icma.as/vaccines/>) adresinde yer aldığı belirtilmektedir.
6. Ayrıca, acil tıbbi bakıma ihtiyaç duyulması veya bir naaşın ülkesine geri gönderilmesinin reddedilmesi durumunda denizcilik firmalarının, etkilenen denizcinin durumu, geminin IMO numarası ve konumu ile ilgili ayrıntıları [Natalie.Shaw@ics-shipping.org](mailto:Natalie.Shaw@ics-shipping.org) adresine ileterek, ilgili üye devletle iletişime geçilmesi için Birleşmiş Milletler kurumlarının bilgilendirmelerini sağlamaları istenmektedir.
7. Gemilerde aşuların karıştırılması ve oksijen taşınmasıyla ilgili iki yeni belge de dahil olmak üzere Uluslararası Denizcilik Sağlığı Birliği (International Maritime Health Association-IMHA) tarafından hazırlanan ICS Covid Rehberi'nin (<https://bit.ly/3mnlNmu>) adresinden indirilebileceği belirtilmektedir.

**Bu belge, 5070 sayılı Elektronik İmza Kanuna göre Güvenli Elektronik İmza ile İmzalanmıştır.**



Evrak Doğrulamak İçin : <https://ebys.denizticaretodasi.org.tr/enVision/Dogrula/BSCLVY6K3>  
 Bilgi için: Alper Mergen Telefon: 0212 252 01 30/246 E-Posta: [alper.mergen@denizticaretodasi.org.tr](mailto:alper.mergen@denizticaretodasi.org.tr)  
 Meclis-i Mebusan Caddesi No:22 34427 Fındıklı-Beyoğlu-İSTANBUL/TÜRKİYE  
 Tel : +90 (212) 252 01 30 (Pbx) Faks: +90 (212) 293 79 35  
 Web: [www.denizticaretodasi.org.tr](http://www.denizticaretodasi.org.tr) E-mail: [iletisim@denizticaretodasi.org.tr](mailto:iletisim@denizticaretodasi.org.tr) KEP: [imeakdto@hs01.kep.tr](mailto:imeakdto@hs01.kep.tr)



8. Psikolojik yardım da dahil olmak üzere denizciler için uluslararası ve bölgesel ölçekte destek sunan kuruluşların iletişim bilgilerinin olduğu belge Ek-2'de yer almaktadır.

Bilgilerinize arz/rica ederim.

Saygılarımla,

*e-imza*

İsmet SALİHOĞLU  
Genel Sekreter

**Ek:**

- 1- ICS'in 20.12.2021 Tarihli Yazısı (8 sayfa)
- 2- Destek Sunan Kuruluşların İletişim Bilgileri (1 sayfa)

**Dağıtım:**

**Gereği:**

- Tüm Üyeler (WEB sayfası ve e-posta ile)
- İMEAK DTO Şube ve Temsilcilikleri
- Türk Armatörler Birliği
- S.S. Armatörler Taşıma ve İşletme Kooperatifi
- GİSBİR (Türkiye Gemi İnşa Sanayicileri Birliği Derneği)
- VDAD (Vapur Donatanları ve Acenteleri Derneği)
- TÜRKLİM (Türkiye Liman İşletmecileri Derneği)
- KOSDER (Koster Armatörleri ve İşletmecileri Derneği)
- Yalova Altınova Tersane Girişimcileri San.ve Tic.A.Ş.
- UTİKAD (Uluslararası Taşımacılık ve Lojistik Hizmet Üretenleri Derneği)
- Türk Uzakyol Gemi Kaptanları Derneği
- GEMİMO (Gemi Makineleri İşletme Mühendisleri Odası)

**Bilgi:**

- Yönetim Kurulu Başkan ve Üyeleri
- İMEAK DTO Şube YK Başkanları
- İMEAK DTO Çevre Komisyonu
- İMEAK DTO Meslek Komite Başkanları

**Bu belge, 5070 sayılı Elektronik İmza Kanuna göre Güvenli Elektronik İmza ile İmzalanmıştır.**



Evrakı Doğrulamak İçin : <https://ebys.denizticaretodasi.org.tr/enVision/Dogrula/BSCLVY6K3>  
**Bilgi için:** Alper MERGEN **Telefon:** 0212 252 01 30/246 **E-Posta:** alper.mergen@denizticaretodasi.org.tr  
Meclis-i Mebusan Caddesi No:22 34427 Fındıklı-Beyoğlu-İSTANBUL/TÜRKİYE  
**Tel :** +90 (212) 252 01 30 (Pbx) **Faks:** +90 (212) 293 79 35  
**Web:** www.denizticaretodasi.org.tr **E-mail:** iletisim@denizticaretodasi.org.tr **KEP:** imeakdto@hs01.kep.tr





Walsingham House  
35 Seething Lane  
London  
EC3N 4AH  
Ek-1  
Tel +44 20 7090 1460

[info@ics-shipping.org](mailto:info@ics-shipping.org) | [ics-shipping.org](http://ics-shipping.org)

This Circular and its attachments (if any) are confidential to the intended recipient and may be privileged. If you are not the intended recipient, you should contact ICS and must not make any use of it.

20 December 2021

**COVID-19(21)45**

**TO: LABOUR AFFAIRS COMMITTEE  
ALL MEMBERS & ASSOCIATE MEMBERS  
BIWEEKLY MEMBERS MEETING PARTICIPANTS  
INTERNATIONAL ASSOCIATION GROUP PARTICIPANTS**

**FORTNIGHTLY COVID-19 UPDATE AS OF 20 DECEMBER 2021**

**Action Required: Members are invited to note that 271963258 Confirmed cases of COVID-19 1246122 additional cases have been confirmed since the last report 4.58% increase in reported cases. 5331019,003 fatalities were recorded which is additional 148016 deaths, 2.78% growth since the last report. 220 Countries/territories have cases. 8337664456 vaccine doses given.**

- [WHO weekly update reports](#) and [WHO vaccine Tracker website](#)
- [ICAO Covid 2021 Economic Impact document](#)
- Open access to in the daily-updated repository of cases
- Global ports currently administering vaccinations to Seafarers are listed Here. Advise additional locations to [Natalie.Shaw@ics-shipping.org](mailto:Natalie.Shaw@ics-shipping.org).
- Members should advise all shipping companies to tell them immediately if someone requires **emergency medical care or if repatriation of a body is denied**. Please then send details regarding the case, vessel IMO number location and situation of the seafarer affected to [Natalie.Shaw@ics-shipping.org](mailto:Natalie.Shaw@ics-shipping.org) to ensure the UN agencies are immediately notified to lobby the member state concerned.
- ICS Covid Guidance documents available for download [here](#) including two IMHA documents relating to mixing vaccines and Oxygen carriage onboard ship

**SITUATION IN NUMBERS BY WHO REGION FOR 11 December 2021**

	<b>Cases</b>	<b>Deaths</b>
Global	<b>271963258</b>	<b>5331019</b>
Americas	<b>99,115,289</b>	<b>2,378,490</b>
Europe	<b>93,603,988</b>	<b>1,619,560</b>
South-East Asia	<b>44,799,253</b>	<b>716,076</b>
Eastern Mediterranean	<b>16,970,719</b>	<b>312,896</b>
Africa	<b>6,716,124</b>	<b>154,185</b>
Western Pacific	<b>10,757,121</b>	<b>149,799</b>

	TOP 12 COUNTRIES	MOST CASES YESTERDAY	HIGH FATALITIES YESTERDAY
1	USA	UK	Russian Federation
2	India	US	Mexico
3	Brazil	France	Vietnam
4	UK	Russian Federation	Ukraine
5	Russia	Italy	Turkey
6	Turkey	Germany	India
7	France	Turkey	Germany
8	Germany	Vietnam	USA
9	Iran	Poland	Italy
10	Spain	South Africa	Greece
11	Argentina	Netherlands	Slovakia
12	Italy	Canada	S Korea

#### SEAFARERS DELIVERING CHRISTMAS



ICS has been asked to encourage Shipping Companies try to allow Seafarers ashore in ports to visit the Seafarers centres during the Festive Period. The ICMA seafarers' centres are all observing strict covid protocols and can provide a place of respite at this challenging time.

#### ACCESS TO COMPANY OR OTHER SUPPORT HELPLINES FOR SEAFARERS

Many companies provide support helplines which seafarers are encouraged to access if necessary over the holiday period. Additionally, the organisations listed below provide different useful services, including emotional support, and most are available 24 hours a day. International and regional helplines are available for seafarers wishing to talk to someone wherever they are in the world. Please feel free to contact the helplines listed at **Annex A** for guidance or support by clicking on to the hyperlinks highlighted in Blue.

#### WHO AND ILO FORM ACTION GROUP WITH GLOBAL TRANSPORT BODIES TO PROTECT WORKERS' RIGHTS AND EASE SUPPLY CHAIN CONGESTION

Please note that the International Air Transport Association (IATA), the International Chamber of Shipping (ICS), the International Road Transport Union (IRU), and the International Transport Workers' Federation (ITF), who met with Dr Tedros Ghebreyesus to make an urgent plea for governments' health departments to avoid restricting the movement of transport workers. World Health Organisation Director-General Dr Tedros Ghebreyesus and ILO Director-General Guy Ryder

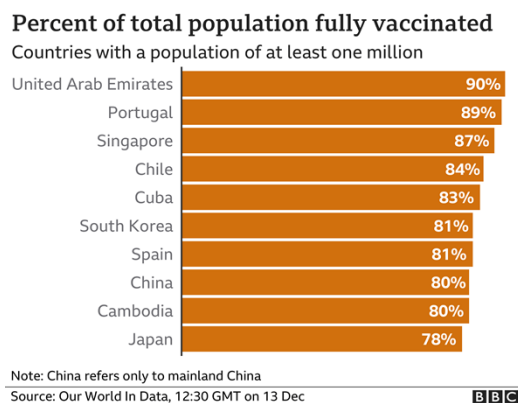
have confirmed their organisations will form an Action Group “as a matter of urgency” to ensure freedom of movement for international transport workers. See

[COMMUNICATIONS\(21\)56- PRESS RELEASE - WHO and ILO form Action Group with global transport bodies to protect workers' rights and ease supply chain congestion](#)

[COMMUNICATIONS\(21\)56- Annex A - WHO and ILO form Action Group with global transport bodies to protect workers rights and ease supply chain FINAL](#)

### **Vaccination Status Source: Our World in Data 15 December 2021, 12:12 GMT**

Of 197 countries & territories administering vaccines and publishing data, 67 are high, 103 middle-income and 27 low-income countries. A map using figures collated by **Our World in Data** - a collaboration between Oxford University and an educational charity - shows the total number of doses given per 100 people, mostly first doses. See [Covid map: BBCNews](#)



The data comes from various sources including figures from Johns Hopkins University, national governments and health agencies. When comparing figures from different countries please note that not all governments record coronavirus cases and deaths similarly, making like for like comparisons between countries difficult.

Other factors include: different population sizes, the size of a country's elderly population or if a particular country has a large amount of its people living in densely-populated areas. Countries may also be in different stages of the pandemic. The map, table and animated bar chart use different sources for figures for France and the UK from that used by Johns Hopkins University. US figures exclude Puerto Rico, Guam or the US Virgin Islands.

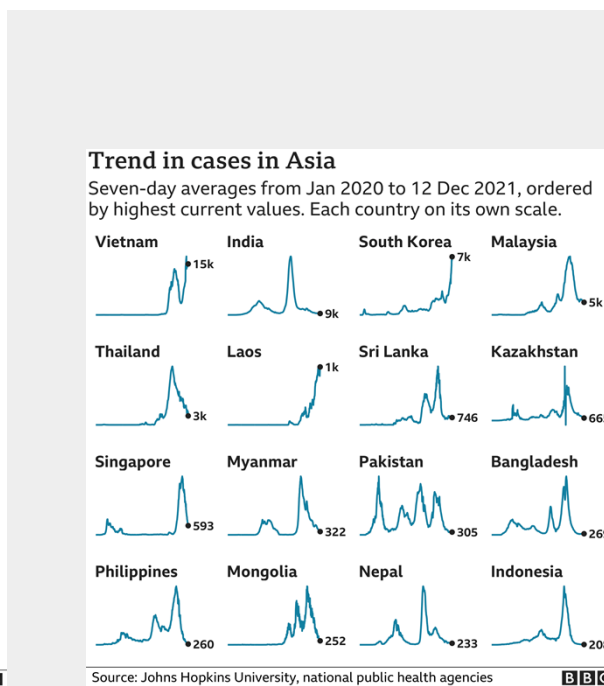
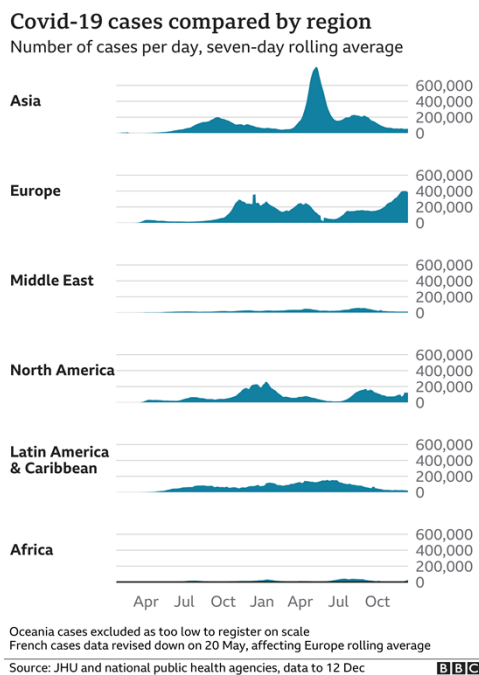
The information is regularly updated but may not reflect the latest totals or vaccines administered per location. Total vaccinations refer to the number of doses given and may include booster doses and those required for full vaccination. The definition of full vaccination varies by location and vaccine type and will change over time. Full vaccination can refer to one dose of a one-shot vaccine, two doses of a two-dose vaccine, etc., or

recovery from infection plus a dose of a vaccine. Definitions do not take account of booster campaigns to control spread of new variants.

Overall, China and India have given the most doses, with over 2.6 billion and 1.3 billion respectively. The US ranks third, with over 480 million. When analysing doses per 100 people in countries with at least one million people, Cuba, Chile & the UAE are highest.

Most countries are prioritising the over-60s, health workers and people who are clinically vulnerable. Countries have secured more vaccine doses than their populations need, while other lower-income countries are relying on a global plan known as Covax, which is seeking to ensure everyone in the world has access to a vaccine.

The number of daily cases is stable or falling in most regions, except Europe which has reported its highest number of daily cases. There is concern over the Omicron variant first identified in South Africa, categorised as a "variant of concern" by WHO. Early studies suggest that it is more transmissible or better able to evade vaccines but further evidence is needed to confirm the findings. Cases have now been identified in at least 89 countries globally and it is expected to eventually become the dominant variant worldwide.



## Asia

Asia, which was the centre of the initial outbreak that spread in China in early 2020, has seen cases falling in recent weeks.

In India, where new daily cases have fallen dramatically since May, the official death toll is over 470,000 and it has recorded over 34.6 million cases - second only to the US.

Please find the following information relating to Border Measures against Omicron Variant in Japan kindly shared by the Japanese Shipowners Association.

To prevent Omicron variant effects, the MLIT strongly requested shipping companies minimize crew changes during December (kindly do not call in Japan without cargo works).

Currently, the number of accepted entries into Japan is 3500 daily and a limited 100 passengers for each flight. Despite the following criteria, the MLIT requests the seafarers stay in a hotel accommodation during quarantine or waiting for boarding and conduct PCR testing every three days even if seafarers are vaccinated.

As of December 17 (effective from 0000JST on December 20).

Countries requiring a 10-day quarantine period are;

Angola, Botswana, Democratic Republic of the Congo, Eswatini, Lesotho, Malawi, Mozambique, Namibia, Republic of South Africa, Zambia, and Zimbabwe

A PCR Test is required on day 3, day 6, and day 10 after arrival

Countries requiring a six-day quarantine period are;

Australia (NSW, NT), Denmark, Germany, Israel, Italy, Korea, the Netherlands, Norway, Portugal, Sweden, and the United Kingdom, The United States of America (New York, Hawaii)

A PCR Test is required on day 3 and day 6 after arrival

Countries requiring a quarantine period of 3 days are;

Australia Austria, Brazil (Sao Paulo), Belgium, Canada (Alberta, British Columbia, Ontario, Quebec), Chile, Croatia, Cyprus, Czech, Denmark, Finland, France, Ghana, Greece, Hong Kong, Iceland, India (Karnataka, Maharashtra), Ireland, Nigeria, Pakistan, Reunion, Romania, Spain, Switzerland, Tanzania, the UAE, USA (California, Connecticut, Colorado, Louisiana, Maryland, Massachusetts, Minnesota, Missouri, Nebraska, Pennsylvania, Texas, Washington, Washington D.C.)

A PCR Test is required on day 3 after arrival.

If the on-signer boards the same flight with an infected person of the Omicron variant, the on-signer must be quarantined and take PCR testing every two days. The above list is for seafarers coming by air only.

Regardless of countries COVID-19 vaccination certificates issued, the Japanese quarantine authorities will accept certificates of the following:

1. The following items must be shown in English (or Japanese):

- Name;
- The Date of Birth;
- Name of Vaccine (Maker);
- Dates of dosed; and
- Times of dose.
- Certificate issued by the government authorities.

Vaccines must be either: Comirnaty (Pfizer/Biontech), Vaxzevria (AstraZeneca), COVID-19 Vaccine Moderna/Spikevax (Moderna), or Covishield

- Certificate where the authority can confirm vaccines were dosed twice.
- The date of the second dose must be documented and at least 14 days after the double dose

### **Latin America**

Brazil has had over 22 million cases and 615,000 deaths - the world's second highest death toll and Mexico has seen the fourth highest number of deaths globally, with over 295,000.

There have been more than 200,000 deaths in Peru, which has seen the highest number of deaths by population - over 600 deaths for 100,000 people.

### **Europe**

Many European countries, including Russia, Ukraine, Germany, and Poland, have seen an increase in cases recently, driven by the Covid Delta variant.

According to KVNR as from Saturday the Philippines lifted the travel ban for passengers coming from the Netherlands and Belgium. It is hoped that this will enable full resumption of crew changes in ports in the Netherlands and Belgium. This might come a bit late for those wanting to be home with Christmas (taking into account the quarantine requirements). However, as the Netherlands entered a full lockdown yesterday the situation may inevitably change again.

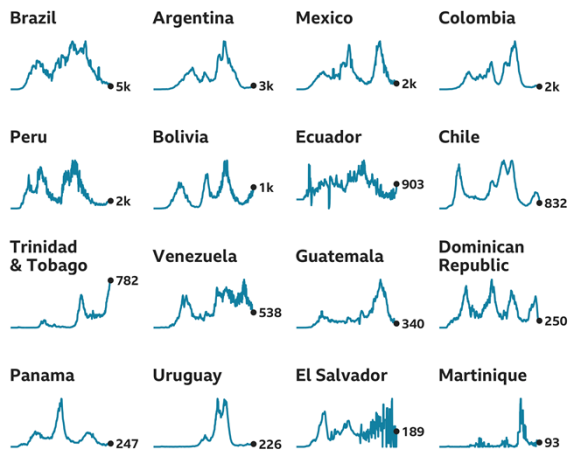
The UK has one of the highest rates of covid infection in Europe but its relatively high level of vaccination has greatly reduced the number of hospitalisations and deaths. WHO has



warned that Europe is once again "at the epicentre" of the Covid pandemic and could see half a million more deaths by February. The WHO gave this warning before the emergence of the Omicron variant, which, along with the increase in Delta infections, has prompted several European countries to increase the scale of their vaccine and booster campaigns. Omicron has also led to the UK and the EU tightening travel restrictions.

### Trend in cases in Latin America & Caribbean

Seven-day averages from Jan 2020 to 12 Dec 2021, ordered by highest current values. Each country on its own scale.

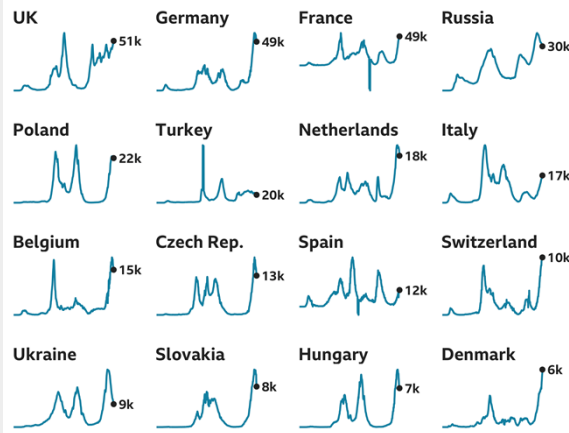


Source: Johns Hopkins University, national public health agencies



### Trend in cases in Europe

Seven-day averages from Jan 2020 to 12 Dec 2021, ordered by highest current values. Each country on its own scale.



Note: French government data revised down on 20 May, affecting rolling average

Source: Johns Hopkins University, national public health agencies



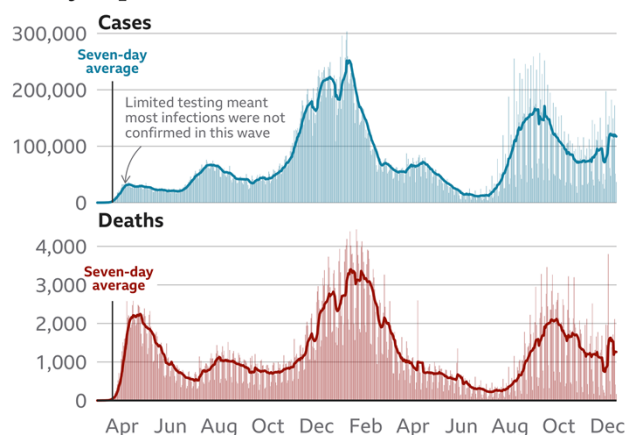
## North America

The US has recorded over 49 million cases and about 790,000 deaths - the highest figures in the world. The death rate in Canada is far lower than the USA but it has recently seen rising daily cases. In November, the US lifted restrictions for vaccinated travellers from the UK, Brazil, China, India, Ireland, Iran, and the Schengen countries - a group of 26 European nations - which had been in place since March 2020. However, in response to the Omicron variant, the US now requires people arriving in the country to test negative for Covid the day before departure and has banned flights from countries in southern Africa.

## Middle East

Several countries in the Middle East have seen severe outbreaks of the virus. The official death toll in Iran - the Middle East's worst-hit country - is over 130,000 but confirmed case numbers are now falling. Israel rolled out a highly successful vaccination programme but saw fluctuations in cases during the year. It has now given boosters to half its population. Following identification of the Omicron variant it has now closed its borders to all foreign nationals. Daily cases in the West Bank and Gaza have also dropped.

### Daily reported cases and deaths in the US

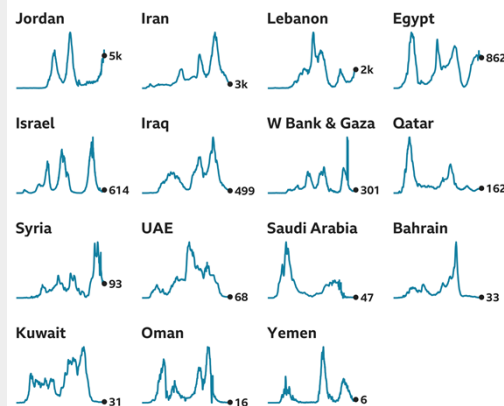


Source: Johns Hopkins University



### Trend in cases in Middle East

Seven-day averages from Jan 2020 to 12 Dec 2021, ordered by highest current values. Each country on its own scale.



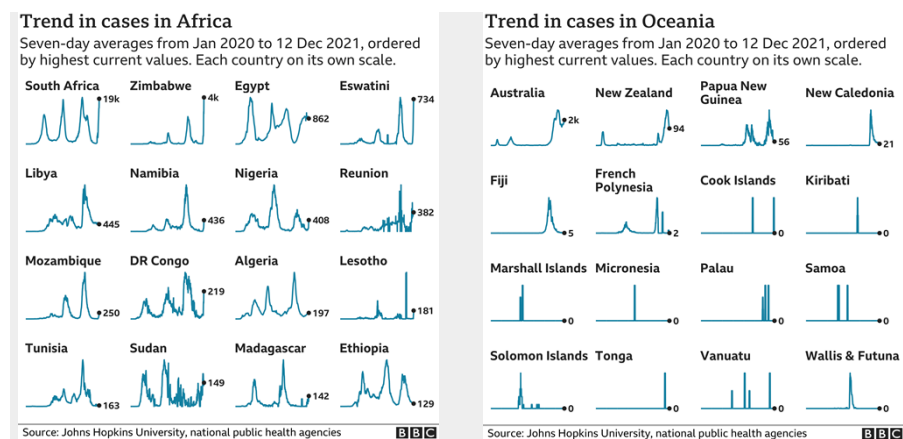
Source: Johns Hopkins University, national public health agencies



## Africa

Africa has seen around 9 million cases and over 224,000 deaths - but the true extent of the pandemic in many African countries is unknown as testing rates are low.

South Africa, with 3million cases and about 90,000 deaths, is the worst affected country in Africa, according to official figures. Omicron has now become dominant and is driving a sharp increase in new infections. The rise in cases has prompted more people to get vaccinated last week. Travellers from countries in southern Africa are hit by travel restrictions to other parts of the world, following identification of Omicron. Morocco has recorded over 950,000 cases of covid and almost 15,000 deaths. While case numbers in Tunisia and Egypt are lower, they have had more deaths.



## Oceania

Australia has reopened its border, restoring freedom to travel to vaccinated citizens and relatives. But easing of further travel restrictions has been delayed for at least two weeks following identification of the Omicron variant. Please click the links for the latest:

[MIAL Domestic Border Closures Summary](#)  
[Mandatory Vaccination Table by Jurisdiction](#)

New Zealand has been praised by some for its response to the pandemic and, alongside Australia, has seen comparatively few deaths due to covid. The country's borders remain closed to most travellers, including New Zealand citizens, but plans have been announced to open up early next year. Auckland, has ended a three-month lockdown, with restaurants, nightclubs and cinemas reopening to vaccinated people

**Natalie Shaw**  
**Director Employment Affairs**

# COVID-19

# Helplines for seafarers

Ek-2

Companies which have their own employee support helplines are encouraged to remind their seafarers of how they can access these if necessary.

Additionally, the organisations listed below provide different useful services, including emotional support, and most are available 24 hours a day.

International and regional helplines are available for seafarers wishing to talk to someone wherever they are in the world.

Please encourage your seafarers to feel free to contact the helplines below for guidance or support.

<b>SeafarerHelp</b>	24/7 multilingual and confidential helpline for seafarers' and their family - emotional support and practical help. Includes Russian and Asian languages <a href="http://www.seafarerhelp.org/">http://www.seafarerhelp.org/</a>
<b>Nautilus 24/7</b>	24/7 multilingual help available to Nautilus members <a href="https://www.nautilusint.org/en/assistance/nautilus-247/">https://www.nautilusint.org/en/assistance/nautilus-247/</a>
<b>NUSI Sahara</b>	24/7 psychological support for Indian seafarers and their family <a href="https://www.nusi.org.in/activities/360-nusi-counselling-helpline-for-seafarers-and-their-families.html">https://www.nusi.org.in/activities/360-nusi-counselling-helpline-for-seafarers-and-their-families.html</a>
<b>AMOSUP</b>	24/7 psychological support for Filipino seafarers and their family +63 2 3310 6641 +63 2 8527 8116 to 20 (local2061) <a href="http://www.amosup.org.ph">http://www.amosup.org.ph</a>
<b>SAIL</b>	British seafarers – help with benefits, debt and housing <a href="http://sailine.org.uk/">http://sailine.org.uk/</a>
<b>Seafarer Support</b>	Central source of information on maritime charities support for seafarers and their families <a href="https://seafarersupport.zendesk.com/hc/en-gb">https://seafarersupport.zendesk.com/hc/en-gb</a>
<b>Seafarer Hospital Society</b>	24/7 online confidential advice and support service for all working and retired seafarers and families for seafarers in the UK <a href="https://seahospital.org.uk/mental-health-and-wellbeing-2/">https://seahospital.org.uk/mental-health-and-wellbeing-2/</a>
<b>Mission to Seafarers Chat to a Chaplain</b>	24/7 MtS & ICMA chaplains available to talk <a href="https://www.missiontoseafarers.org/contact-a-chaplain">https://www.missiontoseafarers.org/contact-a-chaplain</a>
<b>Sailors Society Wellness at Sea</b>	Emergency COVID-19 helpline <a href="https://wellnessatsea.org/helpline/">https://wellnessatsea.org/helpline/</a>
<b>Sailors Society India</b>	Helpline for Indian seafarers and their families 022-48972266 <a href="https://www.sailors-society.org/news/sailors-society-launches-dedicated-24-hour-helpline-for-indian-seafarers">https://www.sailors-society.org/news/sailors-society-launches-dedicated-24-hour-helpline-for-indian-seafarers</a>
<b>DSM.care</b>	24/7 online service to chat with a DSM chaplain <a href="https://dsm.care/">https://dsm.care/</a>
<b>Danish Seaman's Church</b>	Chaplains available for a chat <a href="https://www.samtalertilsoes.dk/">https://www.samtalertilsoes.dk/</a>
<b>Seahealth &amp; Welfare – Denmark</b>	Seahealth & Welfare offers crisis help and psychological assistance – crisis line +45 7240 2610 and Seafarer Helpline +45 6015 5824 <a href="https://shw.dk/kriser#kriser">https://shw.dk/kriser#kriser</a>
<b>Stella Maris</b>	To call Catholic chaplains worldwide for a chat <a href="https://www.stellamaris.org.uk/contact-us/chaplains-list/">https://www.stellamaris.org.uk/contact-us/chaplains-list/</a>



International  
Chamber of Shipping

Shaping the Future of Shipping

For more information, go to  
[ics-shipping.org/covid19](https://ics-shipping.org/covid19)